



Adobe Photoshop Training Courses Sydney, Melbourne, Brisbane and Onsite

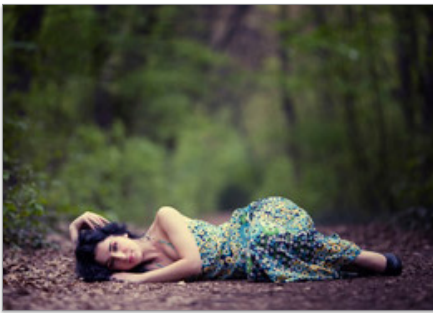
Photoshop Essentials | Course Overview

COURSE DESCRIPTION

Learn how to create, edit and apply special effects to images and text for print, websites or social media with Australia's #1 Adobe Training Partner.

To fast-track and reinforce your Photoshop training, we have developed our own customised courseware (step-by-step printed workbooks), as well as the opportunity to resit your class for free. This course introduces you to the latest techniques and Photoshop tools used in the current version CC2019 for photo-retouching, tonal correction, deep etching, image editing, colour painting and montaging. Also suitable for previous Photoshop versions such as CS6.

As an Adobe Authorised Training Partner, participants receive an Adobe endorsed Certificate.



WHAT YOU WILL LEARN

- Graphics Formats
- Selections
- Compositing
- Cropping & Scaling
- Colour Correction
- Working with Smart Objects
- Introduction to Masks
- Retouching
- Painting
- Combining Images
- Animated GIFs

~~\$790~~ \$690* (+GST)

2 DAYS | 9-4:30PM

Please visit our website for enquiries and bookings:


www.cd.com.au

www.facebook.com/citydesktop

city
desktop training

www.cd.com.au
info@cd.com.au
1300 441 891



 **AUTHORISED**
Training Centre

Why train with us?

- Certified trainers
- 4 city locations
- Mac and PC*
- Free course resit*
- Free after-course support*

*Conditions apply

Premium training for visual communication

Providing quality training since 1989 to the publishing, design, marketing, print and web industries. Join us in Sydney, Brisbane, Canberra & Melbourne.



Adobe Photoshop Training Courses

Sydney, Melbourne, Brisbane and Onsite

Course Outline

THE PHOTOSHOP INTERFACE

- Operating Systems, Versions, Menus and Shortcuts
- Dialogue Boxes & Panels – Some Efficiency Tips
- The Start Workspace
- Graphic Formats
- Photoshop Preferences
- The Photoshop Interface
- The Tools Panel
- The Options Bar
- Photoshop Panels
- Photoshop Workspaces
- Viewing File Information
- Zooming and Scrolling
- Screen Modes
- Arranging Images
- Undoing, Redoing and Reverting
- The History Panel
- Photoshop Help
- The Photoshop Learn Panel

PHOTOSHOP FUNDAMENTALS

- Resolution
- PPI versus DPI
- Working out the Required Resolution and Size of Images
- Changing the Size and Resolution of Images
- Photoshop Colour Modes
- Creating a New Image
- Commonly used Image Formats

SELECTION TECHNIQUES

- Selecting an Entire Image
- Removing a Selection
- The Selection Tools
- Selection Tool Options
- The Marquee Tools
- Transforming Selections
- The Lasso Tools
- The Quick Selection Tool
- The Magic Wand Tool
- Inversing a Selection
- The Colour Range Command
- The Select and Mask Workspace
- Feathering and Shifting Selections

LAYERS

- Layers and the .psd Format
- The Layers Panel
- Layer Visibility
- Renaming Layers
- Changing the Background into a Layer
- Selecting Layers
- Moving Layers
- Creating a New Layer
- Rearranging Layers
- Deleting Layers
- Selecting the Pixels on a Layer
- Layer Opacity
- Layer Blending Modes
- Duplicating Layers
- Duplicating Layers between Images
- Linking Layers
- Merging Layers
- Flattening Layers
- Erasing
- The Eraser
- Selecting and Deleting
- Layer Styles

INTRODUCTION TO COLOUR CORRECTION

- The Adjustment Menu versus the Adjustment Panel
- The Hue/Saturation Command
- Applying an Adjustment Layer
- Editing an Adjustment Layer
- Hiding and Showing Adjustment Layers
- Making Adjustment Layers Effect only the Layer Below
- Deleting an Adjustment Layer
- Brightness and Contrast

TYPE

- Type Layers
- Point Type
- Paragraph Type
- Selecting Type
- Formatting Type
- Working with Type Layers
- Layer Styles
- Rasterizing Type
- Saving Type as Vector Type

Please visit our website for enquiries and bookings:

www.cd.com.au



Adobe Photoshop Training Courses

Sydney, Melbourne, Brisbane and Onsite

CROPPING AND TRANSFORMING

- Cropping Images
- Cropping to Extend the Area around an Image
- Transforming
- Aligning Layers

PROJECTS

- Creating a Facebook Header (Cover Photo)

OUTPUT

- Supplying Files for Printing Purposes
- Supplying Files for Screen Usage
- Common File Types for Screen Usage
- The Save for Web Command
- The Export as Dialogue Box

COLOUR AND TONAL CORRECTION

- The Colour Wheel
- The Colour Balance Command
- The Info Panel
- Identifying a Colour Cast
- The Hue Saturation Command
- Adjusting the Hue and Saturation of Specific Colours
- Colourise a Greyscale Image
- Tonal Range Correction
- The Histogram Panel
- The Levels Command
- Using Levels to Remove a Colour Cast
- Advanced Optional Extras
- Measuring Highlights and Shadows
- Making Automatic Colour and Tonal Corrections
- The Shadow/Highlight Command
- The Black and White Adjustment
- A Suggested Colour Correction Workflow

PAINTING

- Painting in Photoshop
- Foreground and Background Colours
- Choosing a Colour from an Image
- The Colour and Swatches Panel
- The Colour Picker
- The Brush Tool
- Opacity, Flow and Smoothing
- The Brush Picker
- Introduction to Blending Modes
- Filling Selections and Layers
- Fill Layers
- The Eraser Tool

- The Magic Eraser
- The Paint Bucket Tool
- The Gradient Tool

LAYER MASKS

- Layer Masks
- Creating a Layer Mask
- Editing a Layer Mask
- Creating a Mask from a Selection
- Clipping Masks

TRANSFORMING

- Automatically Cropping and Straightening Images
- The Canvas Size Command
- Flipping and Rotating Entire Images
- Flipping and Rotating Layers and Selections
- Transforming
- Free Transform
- Content-Aware Scale
- Warping Type Layers

IMAGE RETOUCHING

- Retouching Images
- The Clone Stamp
- The Spot Healing Brush
- The Healing Brush
- The Patch Tool
- Content-Aware Fill
- Content-Aware Move Tool
- The Red Eye Tool
- The Sponge Tool
- The Dodge and Burn Tools

FILTERS

- Photoshop Filters
- The Gaussian Blur Filter
- The Unsharp Mask Filter
- The Smart Sharpen Filter
- Smart Blur
- The Filter Gallery

CREATING ANIMATIONS

- The Timeline
- Creating Animated GIFs: Step-by-Step

Please visit our website for enquiries and bookings:

www.cd.com.au