



Adobe Premiere Pro Training Courses Sydney, Melbourne, Brisbane and Onsite

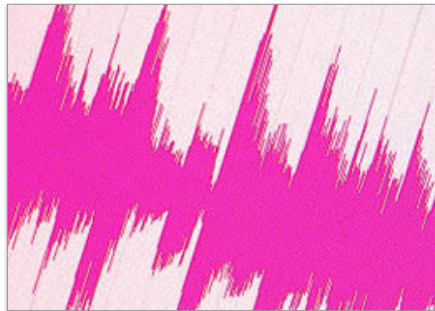
Premiere Pro Essentials | Course Overview

COURSE DESCRIPTION

Video editing is the art of assembling video, audio, images and titles into a cohesive sequence that tells your story and the last part of the video production process. This Adobe authorised course is designed to enable you to get your message across with maximum impact using the powerful and flexible video editing capabilities of Adobe Premiere Pro.

Learn how to best utilise Premiere Pro for your video editing projects for social media, websites, product demonstrations to corporate videos and other promotional or educational purposes.

Our instructors are Adobe Certified, industry experienced and passionate about training! Especially with Adobe Premiere Pro, we recommend using the latest version - CC (Creative Cloud). Not sure which version? See our article on Adobe Creative Cloud.



TRAINING MODULES

- Introduction to Premiere Pro
- Importing Footage
- Essentials Editing Techniques
- Motion Stabilisation
- Working with Effects
- Chroma Keying (Green Screen)
- Audio
- Introduction to Motion
- Creating Titles
- Speed Change
- Transitions
- Project Management
- Exporting

~~\$890~~ **\$790** (+GST)
2 DAYS | 9-4:30PM

Please visit our website for enquiries and bookings:

www.cd.com.au

www.facebook.com/citydesktop

city
desktop training

www.cd.com.au
info@cd.com.au
1300 441 891



Why train with us?

- Certified trainers
- 4 city locations
- Mac and PC*
- Free course resit*
- Free after-course support*

*Conditions apply

Premium training for visual communication

Providing quality training since 1989 to the publishing, design, marketing, print and web industries. Join us in Sydney, Brisbane, Canberra & Melbourne.



Adobe Premiere Pro Training Courses

Sydney, Melbourne, Brisbane and Onsite

Course Outline

INTRODUCTION

- Video Terminology
- TV Broadcast Standards
- Social Media Standards
- SMPTE Timecode
- Workflow
- Keyboard Shortcuts

INTRODUCTION TO PREMIERE PRO

- Creating and Saving a Premiere Project
- Closing Projects
- Projects vs Sequences
- Creating Sequences at Correct Settings
- Changing Existing Sequence Settings
- Premiere's User Interface
- Exploring the Panels
- Customising and Saving Workspaces
- Overview of the Main Panels
- Asset Management
- Using Bins (Folders)
- Preferences

IMPORTING ASSETS

- Techniques for Importing Assets
- Importing Video and Audio Formats (Assets)
- Importing Photoshop, Illustrator Files and Images
- Organizing Footage into Bins

BASIC EDITING TECHNIQUES

- Techniques for Placing Clips onto the Timeline
- Overwrite vs Insert Edits
- Navigating the Timeline
- Selecting, Moving and Trimming Clips on the Timeline
- Editing Clips on the Timeline
- The Ripple Edit Tool
- Snapping to CTI and other Clips
- Timeline 'Sticky' Settings

- Using the Source Monitor (Setting In and Out Points)
- Adding/Removing Tracks
- Source Patching
- Undo's and Re-do's
- Delete Gaps

CREATING TITLES

- The Text Tool
- Basic Text Parameters
- The Shape Tools
- Gradient Fill
- Editing Text in the Essential Graphics Panel
- Text Styles
- Search Adobe Stock Motion Graphics Templates

WORKING WITH EFFECTS

- Applying Effects
- Effect Controls Panel
- 'Fixed' Effects vs 'Added' Effects
- Saving and Re-using Effects
- Basic Introduction to the Lumetri Color Panel
- Copying FX vs Copying Attributes
- Frequently Used Effects
- Adjustment Layers

TRANSITIONS

- Adding Transitions
- Editing Transitions
- Applying Video Transitions to Multiple Clips
- Changing Default Transitions
- Replacing Transitions
- Changing Default Duration of Transitions
- Audio Transitions

STABILIZING FOOTAGE

- Analysing Footage with the Warp Stabilizer Effect
- Smoothing Motion, Removing Motion

CHROMA KEYING (GREEN SCREEN)

- The Ultra Key Effect

ADVANCED EDITING

- Arranging a Storyboard and Automating to the Timeline
- Shuffle Edits
- Advanced Editing Tools
- Introduction to Nesting
- J/L edits (Separate Audio and Video)
- Replacing Clips and Retaining FX Attributes
- Picture in a Picture

INTRODUCTION MOTION

- The Motion Parameters
- Introduction to Keyframing

SPEED CHANGE

- Changing Speed
- Reverse Speed
- Time Stretch Tool
- Variable Time Remapping

AUDIO

- Audio Clips, Tracks and Master Volume
- Adjusting Audio Clip Levels in the Timeline
- Essential Sound Panel
- Auto Ducking Music to Dialogue

EXPORTING

- Exporting for Broadcast
- Exporting for Web, Social Media and Mobile Devices
- Adobe Media Encoder
- Pixel Aspect Ratios
- Common DV Codecs
- Saving Export Presets

PROJECT MANAGER

- Basic Archiving Projects

Please visit our website for enquiries and bookings:

www.cd.com.au